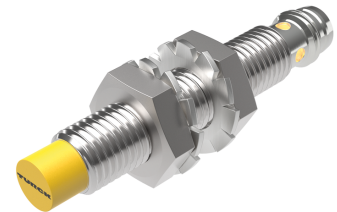


# NI6U-EG08-AP6X-V1131

## Inductive Sensor – With Extended Switching Distance



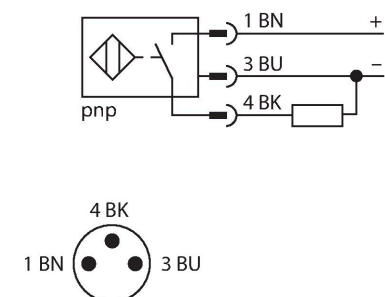
### Technical data

Type	NI6U-EG08-AP6X-V1131
ID	4635801
<b>General data</b>	
Rated switching distance	6 mm
Mounting conditions	Non-flush
Secured operating distance	$\leq (0.81 \times S_n)$ mm
Repeat accuracy	$\leq 2 \%$ of full scale
Temperature drift	$\leq \pm 10 \%$
	$\leq \pm 20 \%, \leq 0 \text{ }^{\circ}\text{C}$
Hysteresis	3...15 %
<b>Electrical data</b>	
Operating voltage $U_B$	10...30 VDC
Ripple $U_{ss}$	$\leq 10 \%$ $U_{Bmax}$
DC rated operating current $I_e$	$\leq 150 \text{ mA}$
No-load current	$\leq 15 \text{ mA}$
Residual current	$\leq 0.1 \text{ mA}$
Isolation test voltage	0.5 kV
Short-circuit protection	yes/Cyclic
Voltage drop at $I_e$	$\leq 1.8 \text{ V}$
Wire break/reverse polarity protection	yes/Complete
Output function	3-wire, NO contact, PNP
DC field stability	200 mT
AC field stability	200 mT <sub>ss</sub>
Insulation class	□
Switching frequency	1 kHz
<b>Mechanical data</b>	
Design	Threaded barrel, M8 x 1

### Features

- Threaded barrel, M8 x 1
- Stainless steel, 1.4427 SO
- Factor 1 for all metals
- Protection class IP68
- Resistant to magnetic fields
- Large switching distance
- High switching frequency
- Integrated protection against predamping
- Little metal-free spaces
- DC 3-wire, 10...30 VDC
- NO contact, PNP output
- M8 x 1 male connector

### Wiring diagram



### Functional principle

Inductive sensors are designed for wear-free and contactless detection of metal objects. uprox+ sensors have significant advantages due to their patented multi-coil system. They excel thanks to their optimum switching distances, maximum flexibility and operational reliability as well as efficient standardization.

Technical data

Dimensions	49 mm
Housing material	Stainless steel, 1.4427 SO
Active area material	Plastic
Max. tightening torque of housing nut	5 Nm
Electrical connection	Connector, M8 × 1
Environmental conditions	
Ambient temperature	-30...+85 °C
Vibration resistance	55 Hz (1 mm)
Shock resistance	30 g (11 ms)
Protection class	IP68
MTTF	874 years acc. to SN 29500 (Ed. 99) 40 °C
Switching state	LED, Yellow

Mounting instructions

Mounting instructions/Description

The image contains four technical diagrams illustrating different mounting methods for the sensor:

- Top Left:** A side view of a sensor mounted on a plate. The dimension  $T$  is indicated as the distance from the mounting surface to the sensor's active area.
- Middle Left:** Two sensors are shown mounted on a plate. The dimension  $G$  is indicated as the distance between the two sensors.
- Bottom Left:** Two sensors are shown mounted on a plate. The dimensions  $N$ ,  $S$ ,  $D$ , and  $W$  are indicated.  $N$  is the distance from the mounting surface to the sensor's active area.  $S$  is the distance between the two sensors.  $D$  is the distance from the mounting surface to the sensor's active area.  $W$  is the width of the mounting plate.
- Right:** A front view of a sensor mounted on a plate. The sensor is shown with a central threaded hole.

Distance D 32 mm

Distance W 18 mm

Distance T 32 mm

Distance S 12 mm

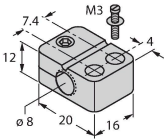
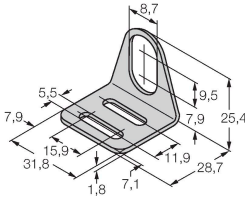
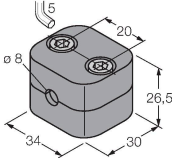
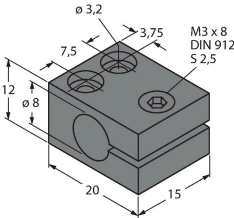
Distance G 36 mm

Distance N 12 mm

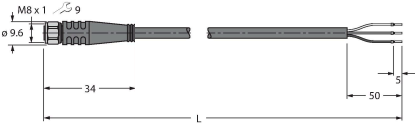
Diameter active area B Ø 8 mm

All non-flush mountable uprox®+ threaded barrel sensors can be screwed to the upper edge of the barrel. In this mounting position, the sensor operates safely with a 20 % reduced switching distance.

Accessories

BST-08B	6947210	Mounting clamp for threaded barrel sensors, with dead-stop; material: PA6	MW08	6945008	Mounting bracket for threaded barrel sensors; material: Stainless steel A2 1.4301 (AISI 304)
					
BSS-08	6901322	Mounting clamp for smooth and threaded barrel sensors; material: Polypropylene	MBS80	69479	Mounting clamp for smooth barrel sensors; mounting block material: Anodized aluminum
					

Accessories

Dimension drawing	Type	ID	
	PKGV3M-2/TEL	6625385	Connection cable, M8 female connector, straight, 3-pin, stainless steel coupling nut, cable length: 2 m, jacket material: PVC, black; cULus approval