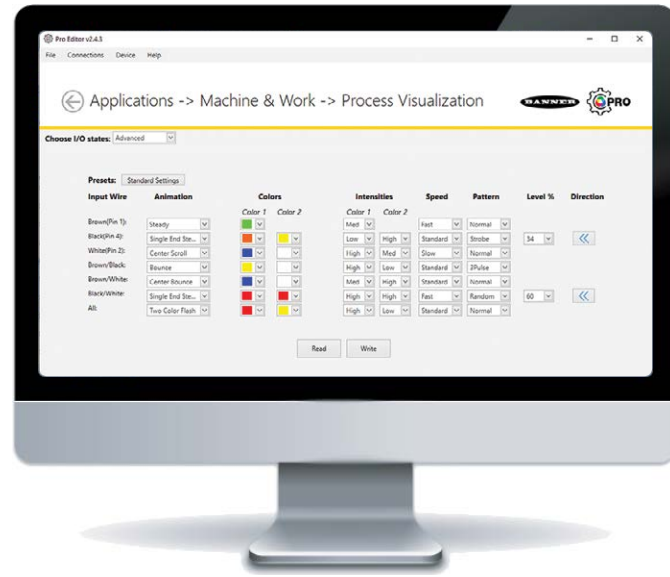


# Lighting and Displays Selection Guide



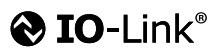
# Programmable Lighting

The Programmable Series configurable multicolor LED devices from Banner Engineering offer limitless possibilities for advanced indication of dynamic machine states, operator interaction, and process status. The Programmable Series is ideal if you are looking for advanced capabilities or flexibility beyond a traditional factory indicator. Whether you have discrete or protocol controlled devices, the Programmable Series use Discrete I/O, IO-Link, Ethernet, or Modbus for real-time communication across your factory.



## Software for Configurable Devices

Banner's free Pro Editor Software allows users to configure device status, colors, animations, and much more for control via discrete inputs, bringing intuitive indication and interaction to the visual factory. Configurable RGB devices make supply chains more efficient by allowing you to standardize on one model that can be customized as needed. The application-based interface makes it easy to configure a device for a wide range of applications such as displaying machine warm-up time, indicating unique steps in an assembly process, showing distance and position information, or communicating multiple machine states.



	S15L	S22 Indicator and Touch Button	K30 Indicator, Touch, and Touchless	K50 Indicator, Touch, Touchless, and Audible	GS60	LCA130T	CL50	TL50
PRO EDITOR SOFTWARE	✓	✓	✓	✓	✓	✓	✓	✓
IO-Link®		✓	✓	✓		✓	✓	✓
Modbus	✓	✓	✓	✓				
PICK-IQ®								
EtherNet/IP								
PROFI NET								

## Technologies



allows control via discrete inputs with advanced software configuration of colors, logic, modes, and more.



is an open standard serial communication protocol that allows for the bi-directional exchange of data from IO-Link supported devices, lights, or indicators that are also connected through a master.



is a serial data communication protocol that is based on a request-response model.



is a purpose-built, Modbus-compatible serial bus protocol that uses a Common ID to reduce the typical latency that results from polling multiple devices.



is an industrial network protocol that adapts the Common Industrial Protocol to standard Ethernet.



is an industrial network protocol for data communication over Industrial Ethernet

## Modes and Applications

**Equipment Status** Translate machine outputs to actionable information

**Assembly Instructions** Step through sequential operator guidance

**Measurement** Convert and display dynamic sensor outputs like distance, level, and more

**Timer** Start, stop, and reset the timer to display takt time and more

**Counter** Increase or decrease the count value based on input pulses



	TL70	K90	K100	TLF100	WLF12	WLS15	WLS27	RLS27	WLS28	SD50 Display	K100 Display	PTL110
PRO EDITOR SOFTWARE	✓	✓	✓	✓	✓	✓	✓	✓	✓	✓	✓	✓
IO-Link®	✓	✓		✓	✓	✓	✓		✓	✓	✓	
Modbus	✓				✓	✓				✓	✓	✓
PICK-IQ®												
EtherNet/IP	✓											
PROFI NET	✓											



Programmable LED indicators offer multiple color choices in a single housing

# Illumination Selection Guide



Series Name	WLF12	WLS15	WLS27	WLS28-2	WLB32
Length (mm)	300 to 4000	220 to 1200	145 to 1130	145 to 1130	285 to 1130
AC/DC	DC	DC	DC	DC	AC and DC
White Lumens per Foot (300 mm)	285	350 standard 750 high intensity	800	800	750
IP Rating	IP66, IP67, IP69K	IP66, IP67	IP66, IP67, IP69K	Unsealed: IP50 Sealed: IP67, IP69K	IP50
Programmable	(see page 10)	(see page 10)	(see page 10)	(see page 10)	
Color Options		✓	✓	✓	
Communication Protocol		IO-Link® Modbus	IO-Link®	IO-Link®	Modbus TCP
Hazardous Location Models			HLS27	HLS28	



Series Name	RLS27	WLS70	WLB72	WLB92	BL60	WLC60	WLH60 High Temp
Length (mm)	285 to 2270	300 to 1200	1200 and 2400	550 and 1100	340 and 640	340 and 640	340 and 640
AC/DC	DC	AC and DC	AC	AC and DC	DC	DC	DC
White Lumens per Foot (300 mm)	850	1350	1700	1755	1375	1300	1150
IP Rating	IP67, IP69K	IP65	IP20	IP40	IP67, IP68g, IP69K	IP68, IP68g, IP69K	IP68, IP69K
Programmable	(see page 10)						
Color Options	✓				✓	✓	
Communication Protocol							
Hazardous Location Models							

# Spot and Area Lights

## Selection Guide



Series Name	S15WL	WL50S	WL50-3
Dimensions (mm)	ø 15	ø 50	ø 50
AC/DC	DC	DC	DC
White Lumens	55	295	300
IP Rating	IP65, IP67, IP68	IP67, IP69K	IP67, IP69K
Programmable	(see page 10)		
Color Options		✓	



Series Name	GS60	WLC90	WLR95	WLA-2
Dimensions (mm)	ø 60	89 x 91	94 x 49	105 x 180 to 360 x 180
AC/DC	DC	DC	DC	DC
White Lumens	300	700	600	1025 per 85 mm panel
IP Rating	IP66, IP67	IP68, IP68g, IP69K	IP65, IP67, IP68	Sealed: IP67, IP69K Encapsulated: IP67, IP68, IP69K
Programmable	(see page 10)			
Color Options	✓		✓	

# Tower Lights

## Selection Guide



Series Name	TL30	TL50	TL70	TLF100
Segment Diameter (mm)	30	50	70	100
Mounting Hole Diameter (mm)	30	30	30	—
AC/DC	DC	AC or DC	AC or DC	DC
IP Rating	IP65	IP65, IP67	IP65	IP65, IP69K
Programmable		✓	✓	✓
Communication Protocol		IO-Link®	IO-Link® Modbus EtherNet/IP PROFINET CANopen	IO-Link®
Audible	✓	✓	✓	✓
Daylight Visible		✓		✓
Wireless			✓	
Modular Construction			✓	



Series Name	TL50 Andon	CL50	TL15	WLS27
Segment Diameter (mm)	50	50	15	27
Mounting Hole Diameter (mm)	—	30	—	—
AC/DC	DC	DC	DC	DC
IP Rating	IP54	IP67	IP66, IP67, IP68	IP66, IP67, IP69K
Programmable		✓		✓
Communication Protocol		IO-Link®		IO-Link®
Audible	✓	✓	✓	
Daylight Visible				
Wireless	✓			
Modular Construction			✓	



Programmable LED indicators offer multiple color choices in a single housing

# Indicators

## Selection Guide



Series Name	S18L/S22L	S22	K30	K50	K70	K90	K100
Housing Diameter (mm)	18 or 22	22	30	50	70	90	100
Mounting Hole Diameter (mm)	18/22	22	30	30	30	30	36
AC/DC	DC	DC	DC	DC	DC	DC	AC or DC
IP Rating	IP67, IP69K	IP66, IP67, IP69K	IP67, IP69K	IP65, IP67, IP69K	IP65	IP66, IP67	IP69K
Programmable		✓	✓	✓		✓	✓ (DC models only)
Communication Protocol		IO-Link® Modbus	IO-Link® Modbus	IO-Link® Modbus		IO-Link®	
Audible				✓			✓
Daylight Visible	✓			✓			✓



Series Name	GS60	S15L	WLF12	WLS15	WLS27	RLS27	WLS28
Housing Diameter (mm)	60	15	12	15	27	27	28
Mounting Hole Diameter (mm)	30	—	—	—	—	—	—
AC/DC	DC	DC	DC	DC	DC	DC	DC
IP Rating	IP66, IP67	IP66, IP67, IP68	IP66, IP67, IP69K	IP66, IP67	IP66, IP67, IP69K	IP67, IP69K	Unsealed: IP50 Sealed: IP67, IP69K
Programmable	✓	✓	✓	✓	✓	✓	✓
Communication Protocol		Modbus	IO-Link® Modbus	IO-Link® Modbus	IO-Link®		IO-Link®
Audible							
Daylight Visible						✓	



Programmable LED indicators offer multiple color choices in a single housing

# Touch Button and Pick-to-Light Selection Guide



Series Name	S22 Touch	K30 Touch	K50 Touch	K70 Touch
Indicator Diameter (mm)	22	30	50	70
Mounting Hole Diameter (mm)	22	22	30	30
AC/DC	DC	DC	DC	DC
IP Rating	IP66, IP67, IP69K	IP67, IP69K	IP65, IP66, IP67, IP69K	IP65
Programmable	✓	✓	✓	✓
Communication Protocol	IO-Link® Modbus	IO-Link® PICK-IQ® Modbus	IO-Link® PICK-IQ® Modbus	
Sensor Range	—	—	—	—
Audible			✓	✓



Series Name	K30 Touchless	K50 Touchless	K50 Touch Display	PTL110
Indicator Diameter (mm)	30	50	50	15
Mounting Hole Diameter (mm)	22	30	30	—
AC/DC	DC	DC	DC	DC
IP Rating	IP65	IP66, IP67, IP69K	IP67, IP69K	IP66, IP67
Programmable	✓	✓	✓	✓
Communication Protocol		IO-Link® PICK-IQ® Modbus	IO-Link® PICK-IQ® Modbus	PICK-IQ®
Sensor Range	20 to 1000 mm	20 to 1000 mm	—	100, 200 mm
Audible				



Programmable LED indicators offer multiple color choices in a single housing

# Displays

## Selection Guide



Series Name	K50 Touch Display	K50 I/O Controller with Display
Dimensions (mm)	ø 50	ø 50
Number of Characters	4	4
IP Rating	IP67, IP69K	IP67, IP69K
Control Capabilities	✓	✓
Programmable	✓	✓
Wireless		

Series Name	SD50	K100	PTL110
Dimensions (mm)	386 x 52	ø 100	35 x 110
Number of Characters	16 or 29 scrolling	32 scrolling	3
IP Rating	IP65	IP65	IP66, IP67
Control Capabilities			✓
Programmable	✓	✓	✓
Wireless	✓		

Communication Protocol

IO-Link®  
 PICK-IQ®

IO-Link®  
 Modbus

IO-Link®  
 Modbus

PICK-IQ®



Programmable LED indicators offer multiple color choices in a single housing

# Smarter Automation. Better Solutions.™

Banner Engineering designs and manufactures industrial automation products including sensors and measurement devices; lighting, indicators, and displays; connectivity technology; condition monitoring solutions; machine safety products; industrial wireless systems; remote I/O; plus barcode scanners and machine vision. By listening to customers and engineering solutions that remove production constraints so they can achieve operational goals, Banner is an integral part of making many of the things we use every day, from food and medicine to cars and electronics. In fact, a high-quality, reliable Banner product is installed somewhere around the world every two seconds. Headquartered in Minneapolis since 1966, Banner is an industry leader with more than 10,000 products, operations on five continents, and a worldwide team of more than 5,500 employees and partners. Our dedication to innovation and personable service makes Banner a trusted source of smart automation technologies to customers around the globe.

